

# Appendix 3

## DVR Manager

### Table of Contents

#### 3.1 Installation

##### 3.1.1 Start

##### 3.1.2 Selection of Installation Method

##### 3.1.3 On Installing

##### 3.1.4 Finish

#### 3.2 Execution

##### 3.2.1 DVR

###### 3.2.1.1 Setup

###### 3.2.1.2 Control

###### 3.2.1.3 Search

##### 3.2.2 MultiDVR

###### 3.2.2.1 Setup

###### 3.2.2.2 Control

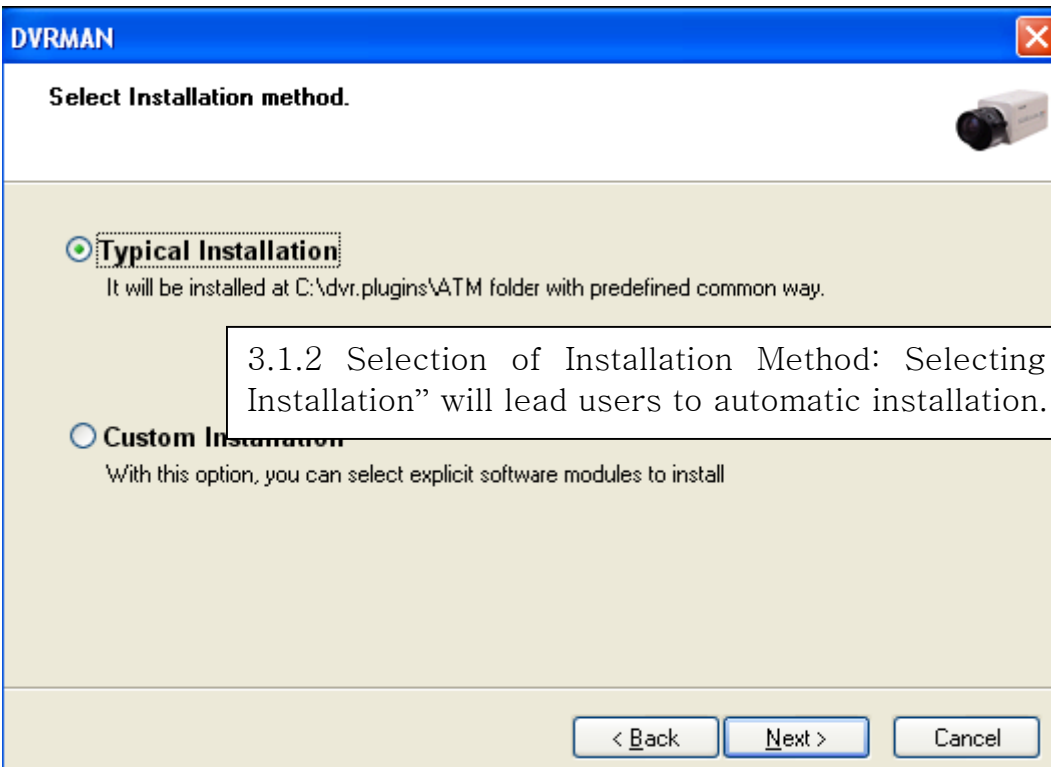
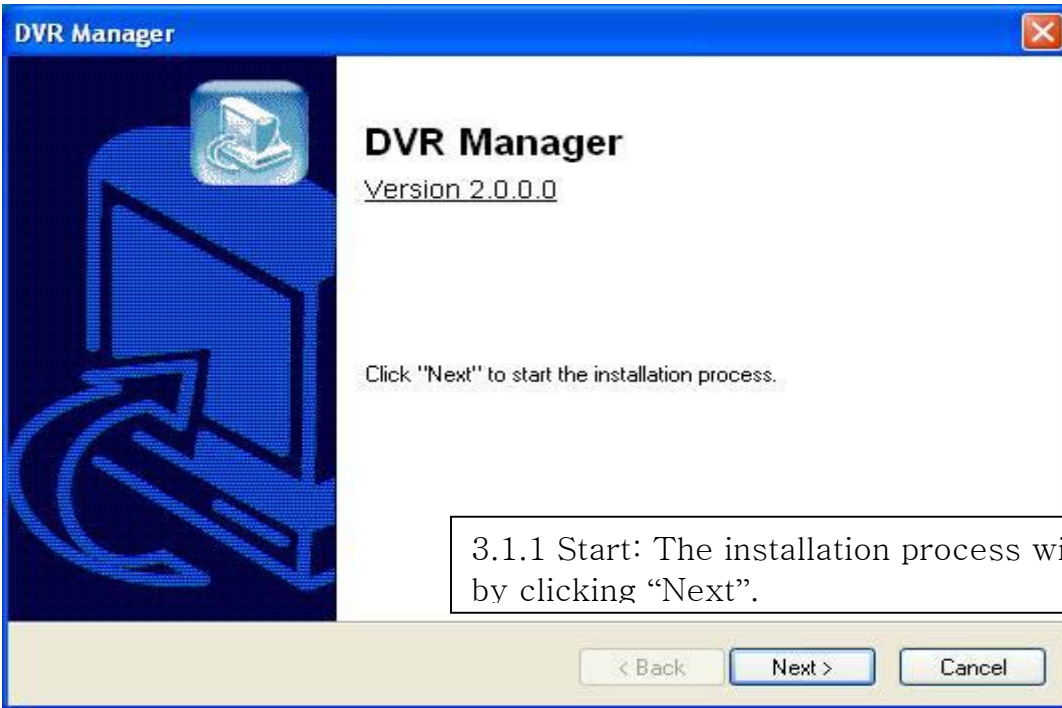
##### 3.2.3 C & S (Central Station)

###### 3.2.3.1 Setup

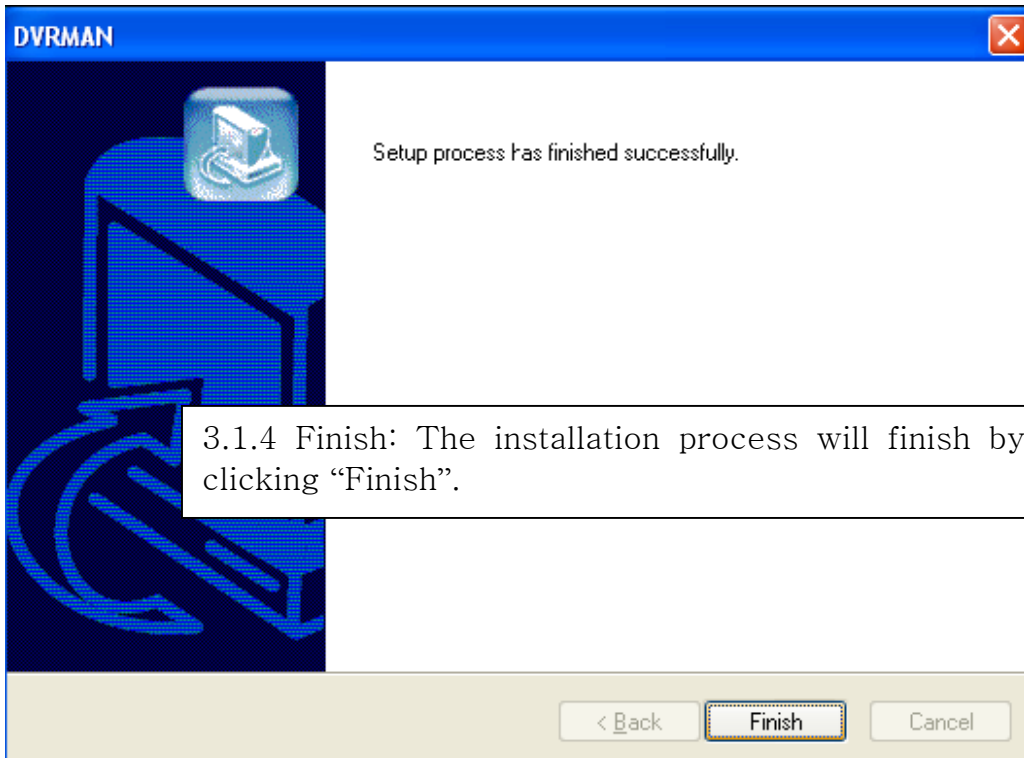
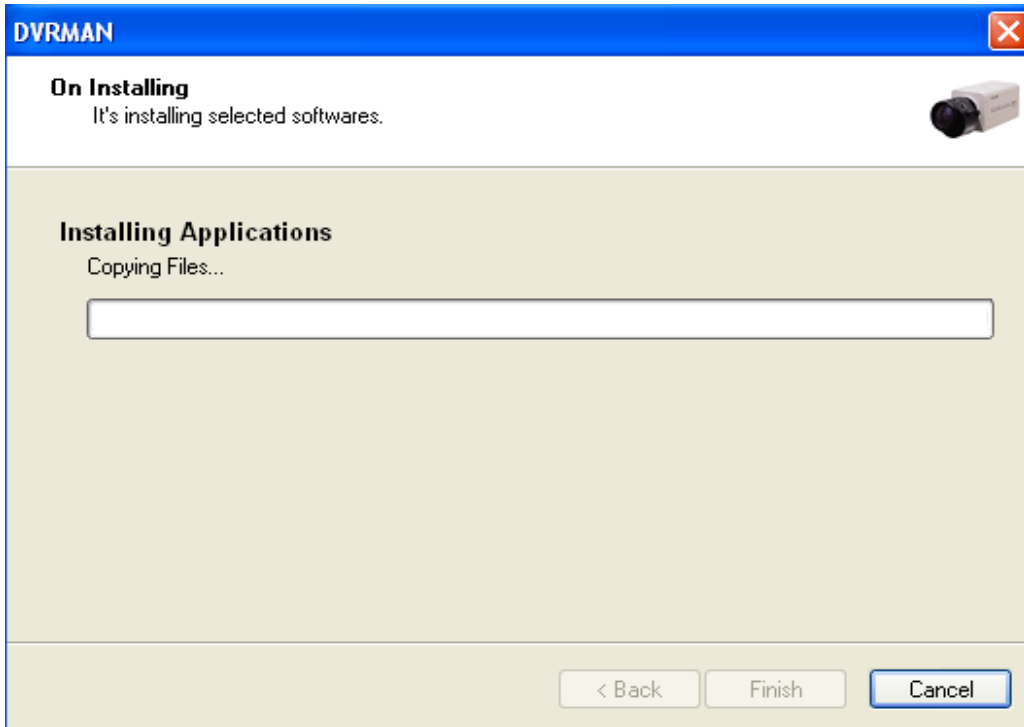
###### 3.2.3.2 Event

###### 3.2.3.3 E-Map

3.1 Installation



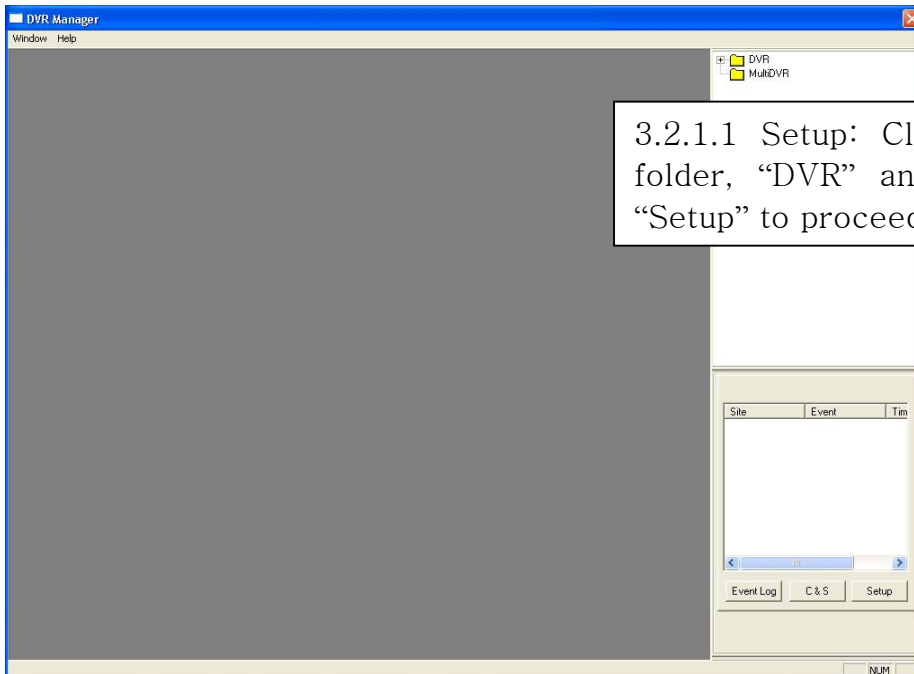
3.1.3 On Installing (copying drivers and files)



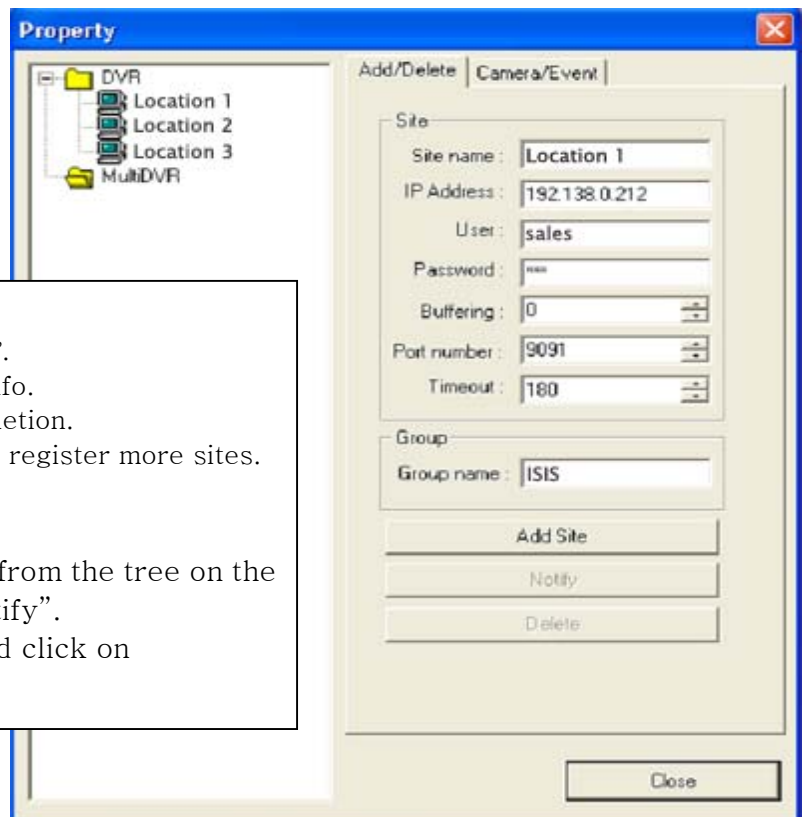
3.1.4 Finish: The installation process will finish by clicking "Finish".

## 3.2 Execution

3.2.1 DVR: It allows users to monitor one specific site selected



3.2.1.1 Setup: Click on the folder, "DVR" and click on "Setup" to proceed.

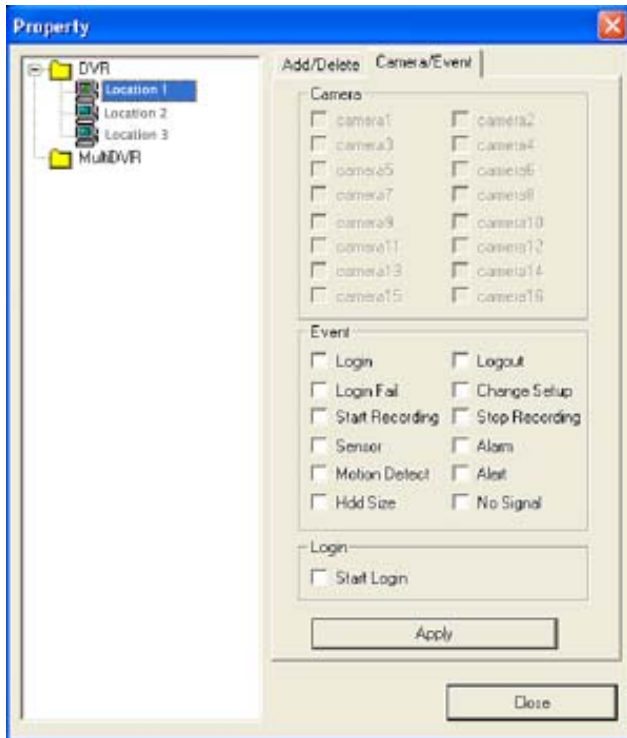


### Registration Steps:

1. Click on the folder, "DVR".
2. Type in all the required info.
3. Click "Add Site" for completion.
4. Repeat the above steps to register more sites.

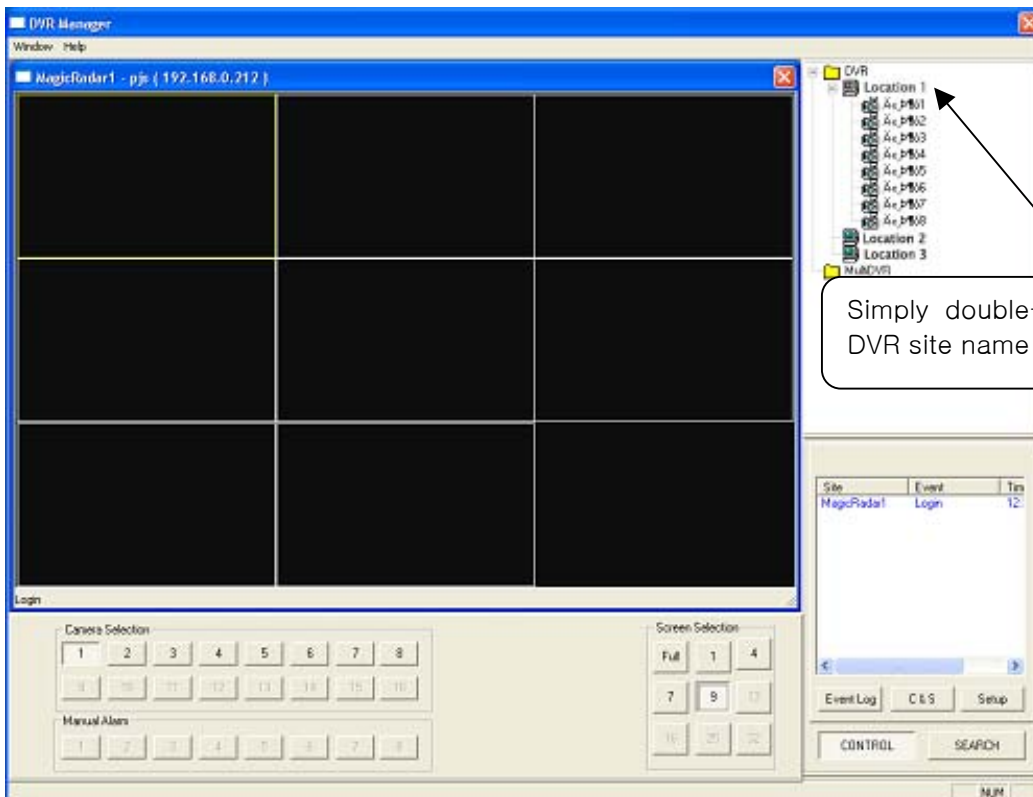
### Note

1. To edit a DVR site, select it from the tree on the left, edit it and click on "Notify".
2. To delete a site, select it and click on "Delete".



Checked events will be reported to the DVR Manager and recorded in the Event Log.

3.2.1.2 Control

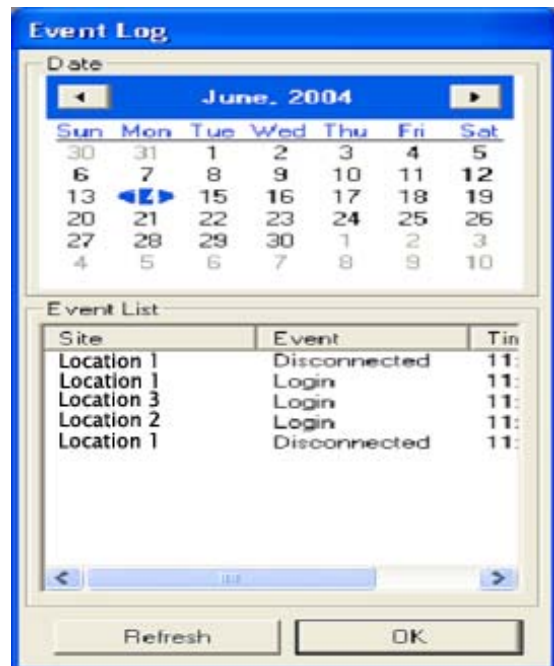


Simply double-click on a DVR site name to connect.

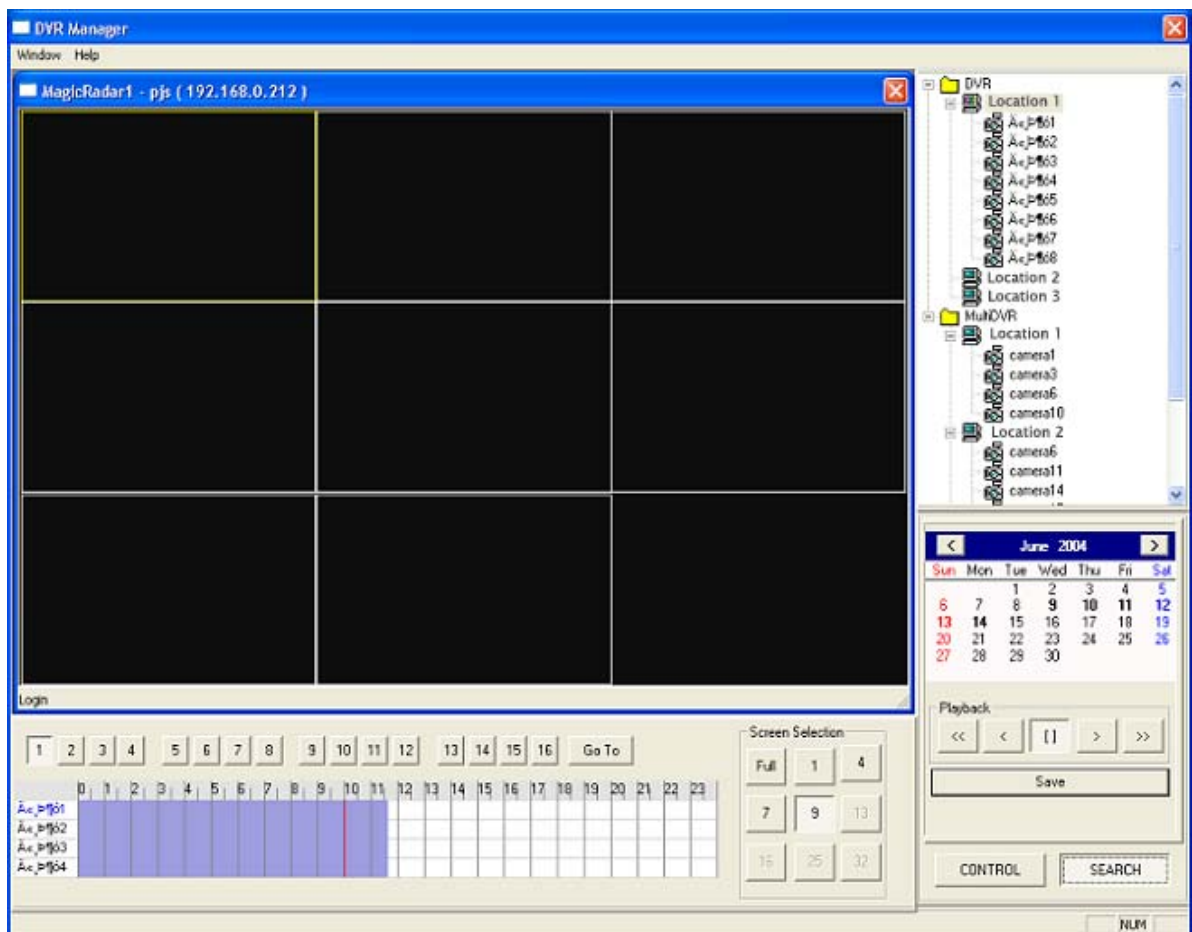
Manual Alarm:

1. Setting alarms on the DVR Server
2. Monitoring on the DVR Manager
3. Detecting an event
4. Clicking the alarm button.
5. Alarm output on the DVR Server

Event Log



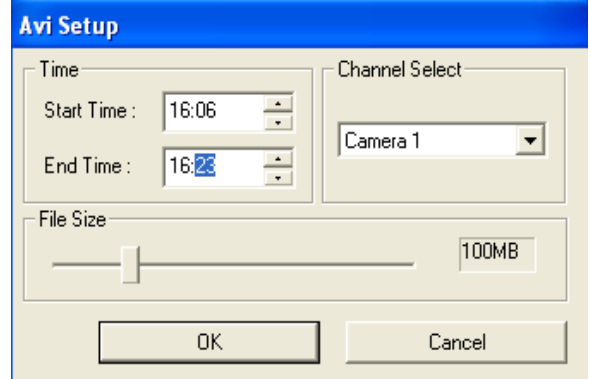
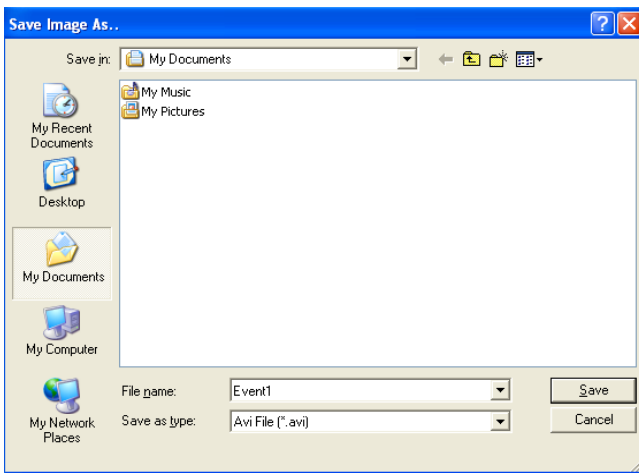
3.2.1.3 Search



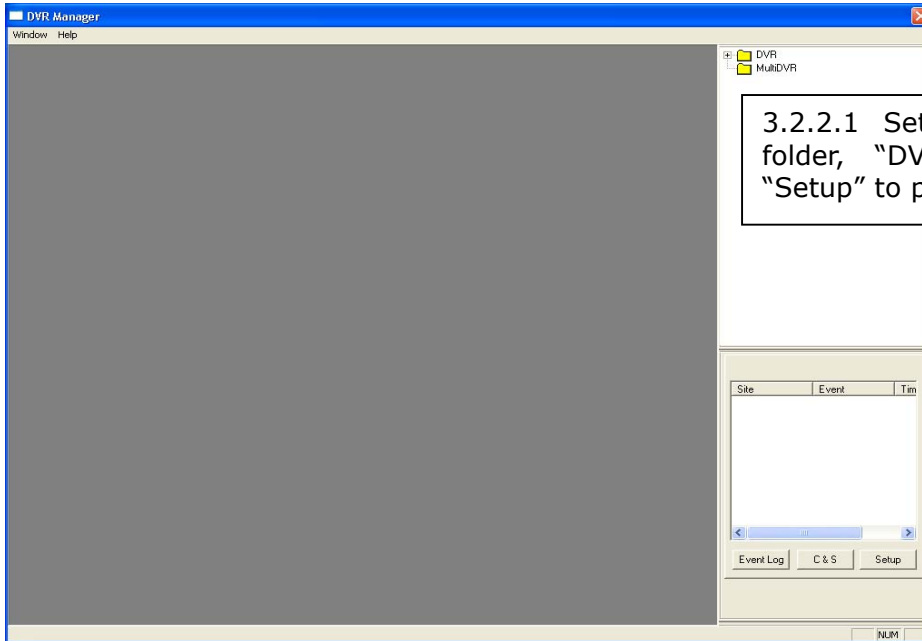
Search Steps:

1. Select a DVR site from the tree at the top right for playback.
2. Select a date from the calendar.
3. Select time to be searched either by clicking on the time bar or by using "Go To".

Saving in AVI File Format

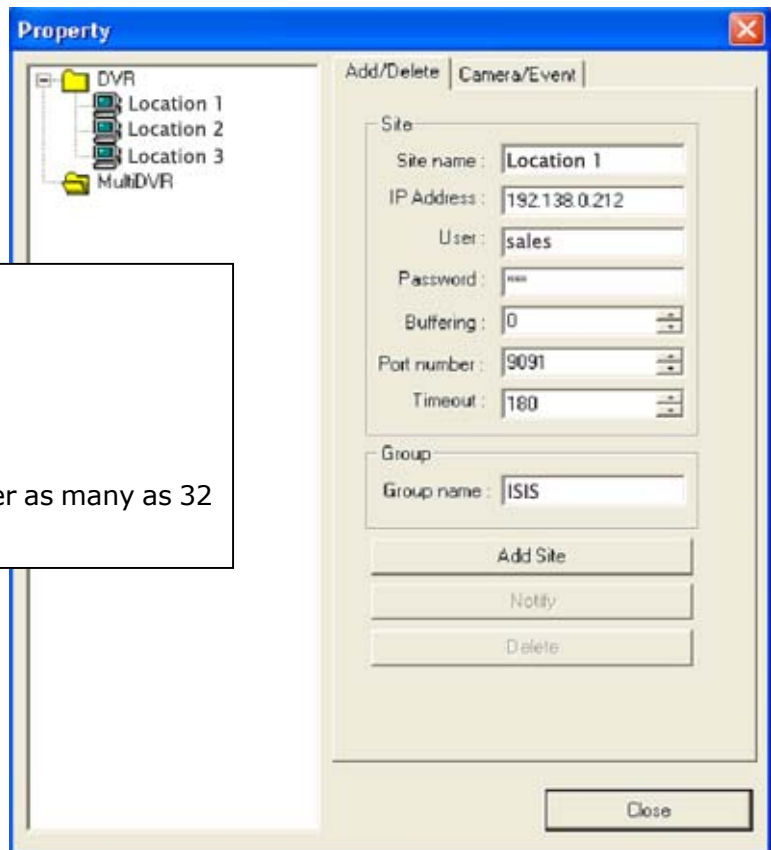


3.2.2 MultiDVR: It allows users to monitor as many as 32 cameras from different DVR sites.

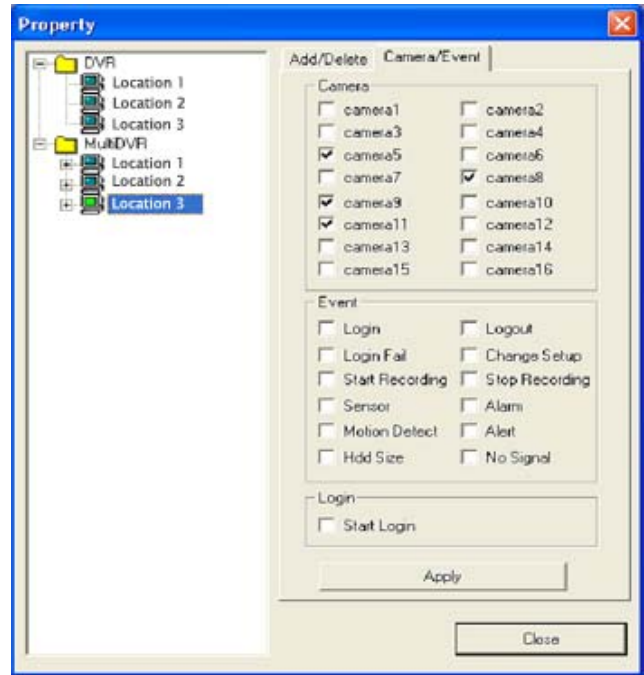


3.2.2.1 Setup: Click on the folder, "DVR" and click on "Setup" to proceed.

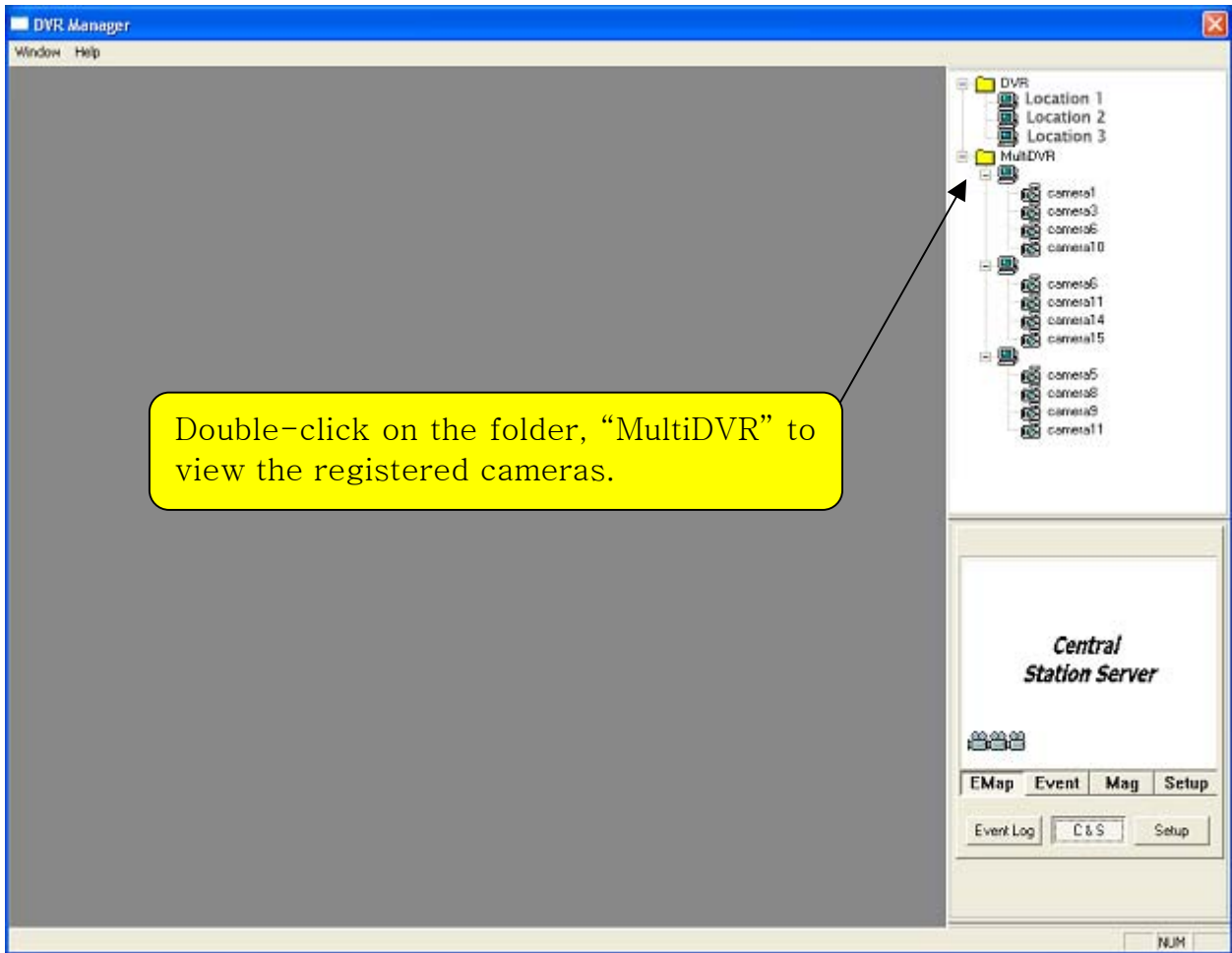
- Registration Steps:
1. Click on the folder, "MultiDVR".
  2. Type in all the required info.
  3. Click on "Camera/Event".
  4. Select cameras to monitor.
  5. Click "Apply".
  6. Repeat the above steps to register as many as 32 cameras.







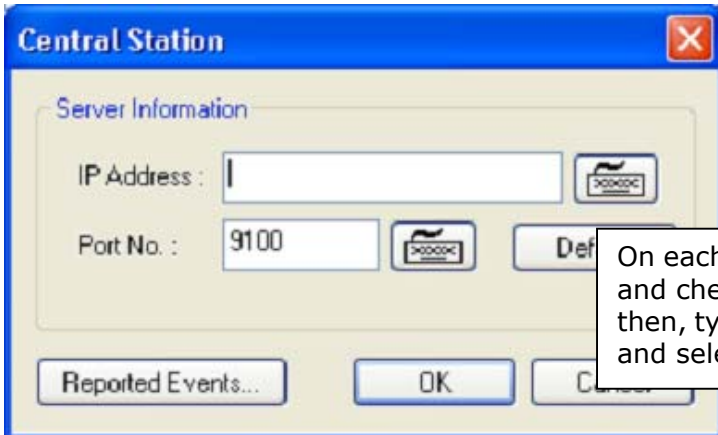
3.2.2.2 Control



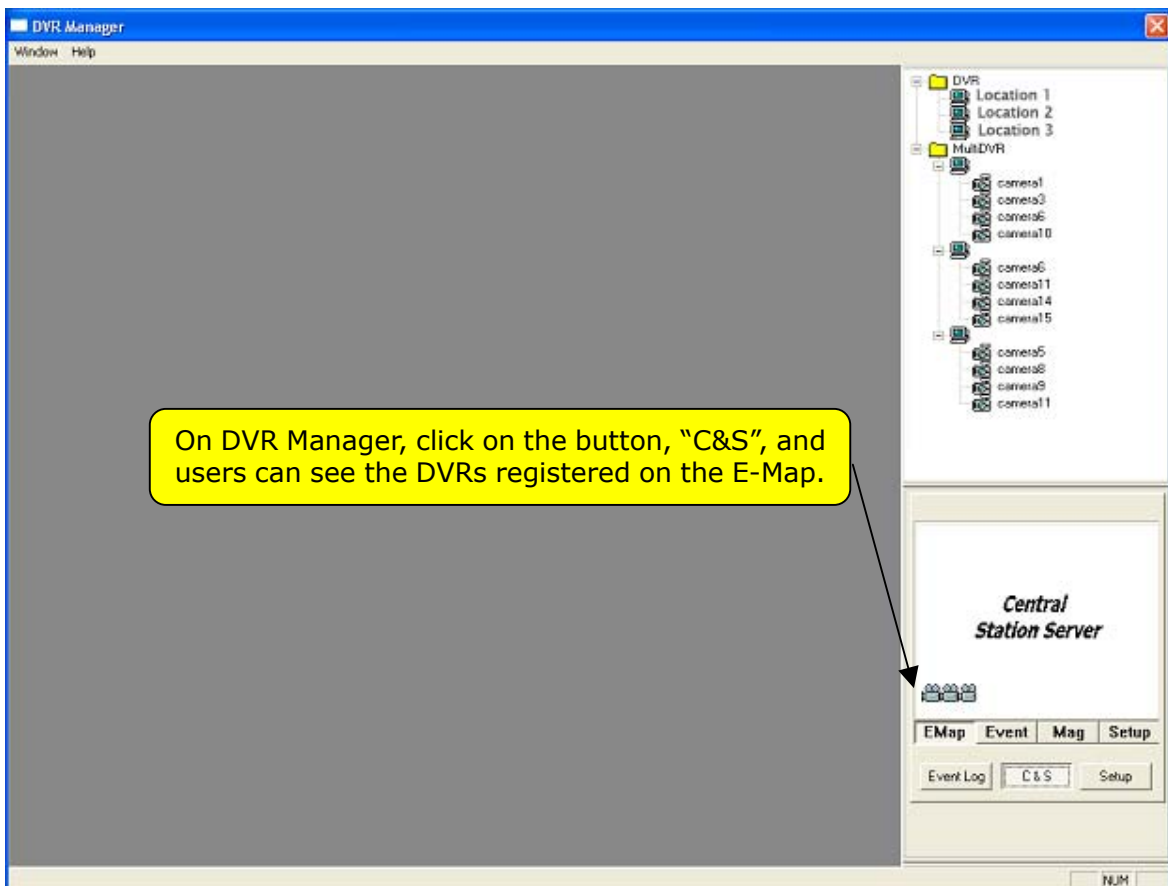
Double-click on the folder, "MultiDVR" to view the registered cameras.

3.2.3 C & S (Central Station): It allows users to manage events received from numerous DVR sites.

3.2.3.1 Setup



On each DVR server, go to "Setup/Network" and check the box next to "Central Station" then, type in the IP address of DVR Manager and select events to report.

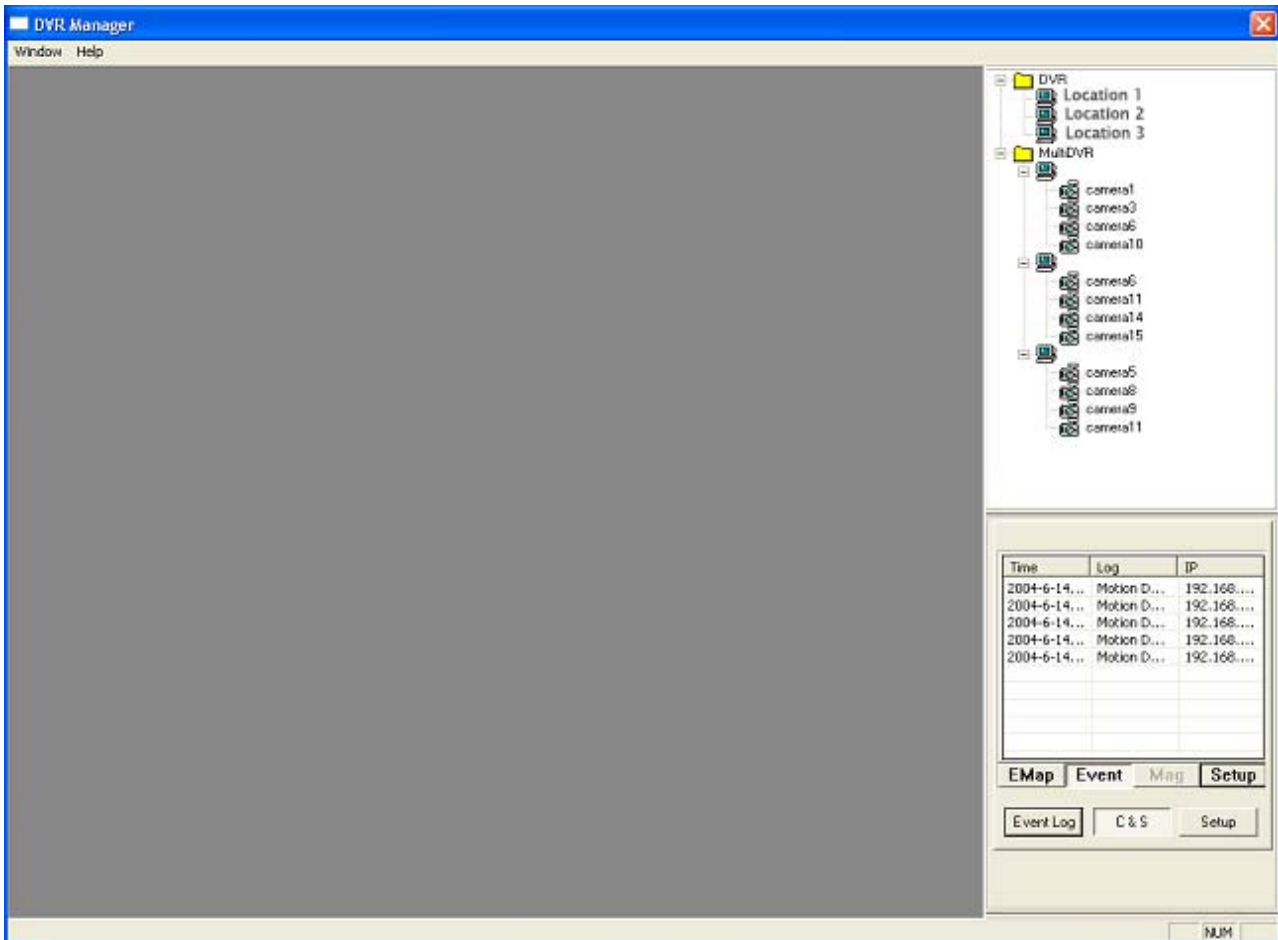


On DVR Manager, click on the button, "C&S", and users can see the DVRs registered on the E-Map.



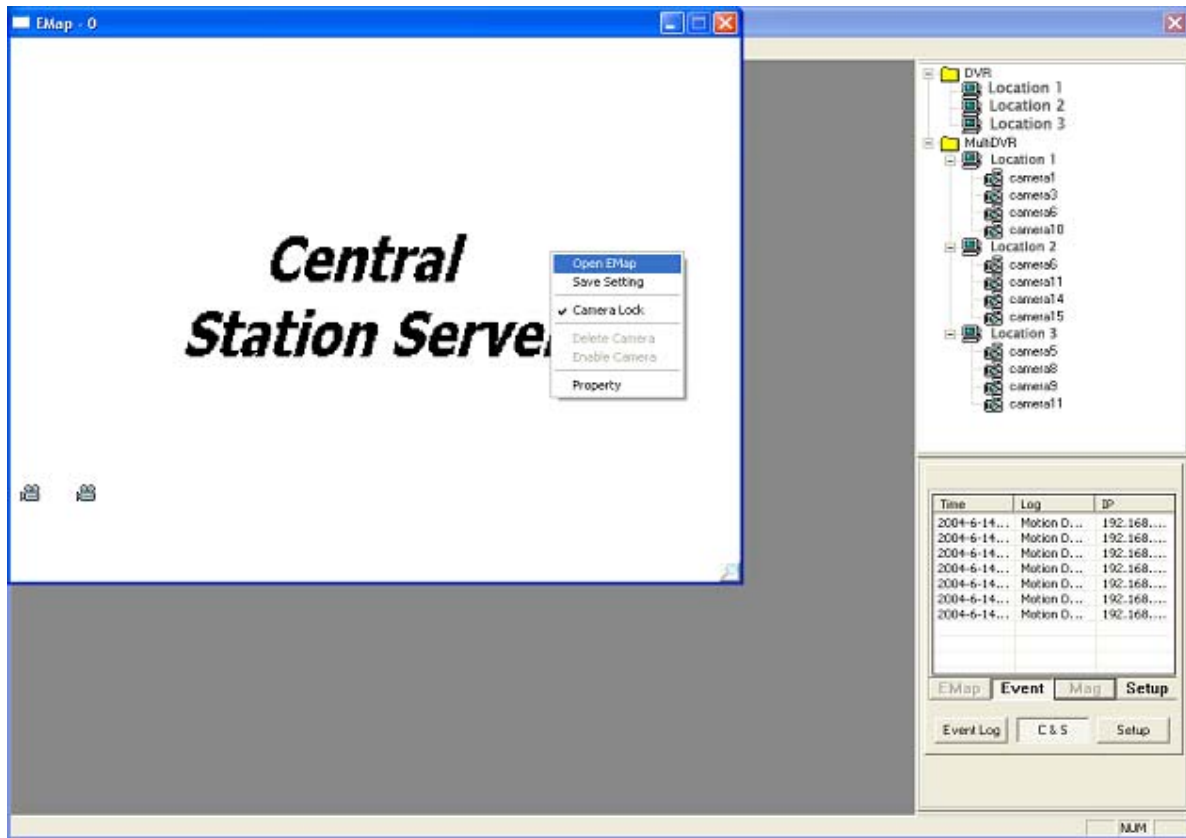
Click on "Setup" for the port setup. The default value, 9100 is good to use in all cases.

### 3.2.3.2 Event

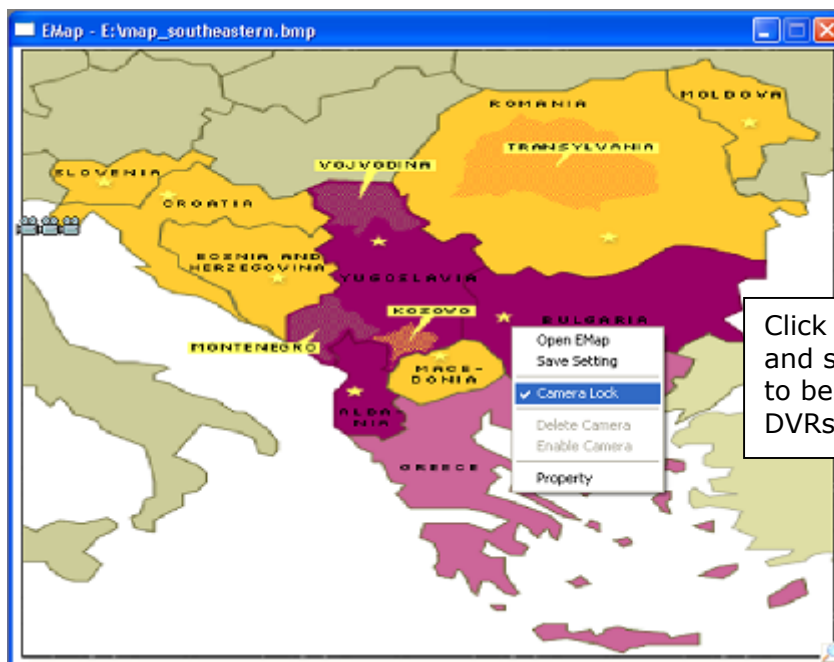


"Event" displays all the events coming in from registered DVRs. Double-clicking on an event will take users to the DVR server where the event happened.

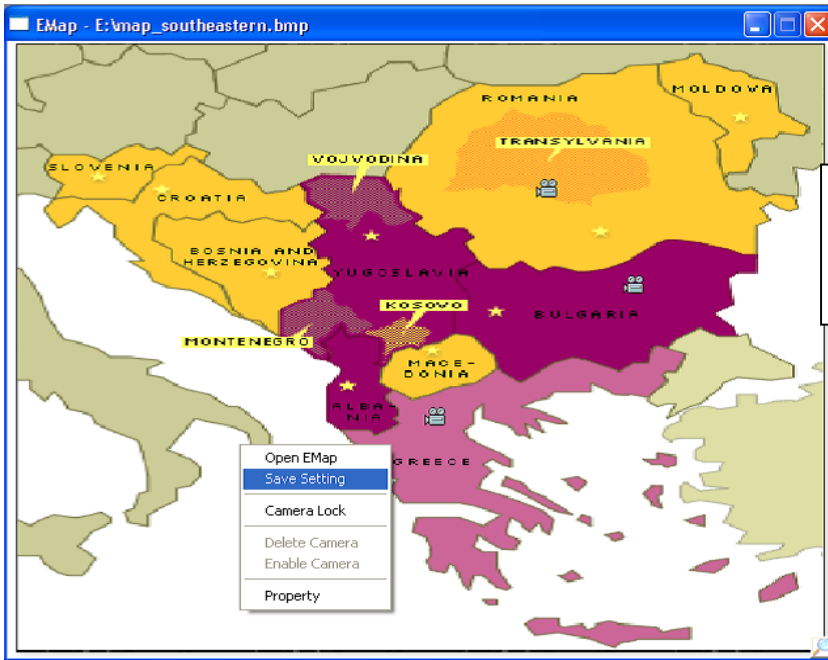
3.2.3.3 E-Map



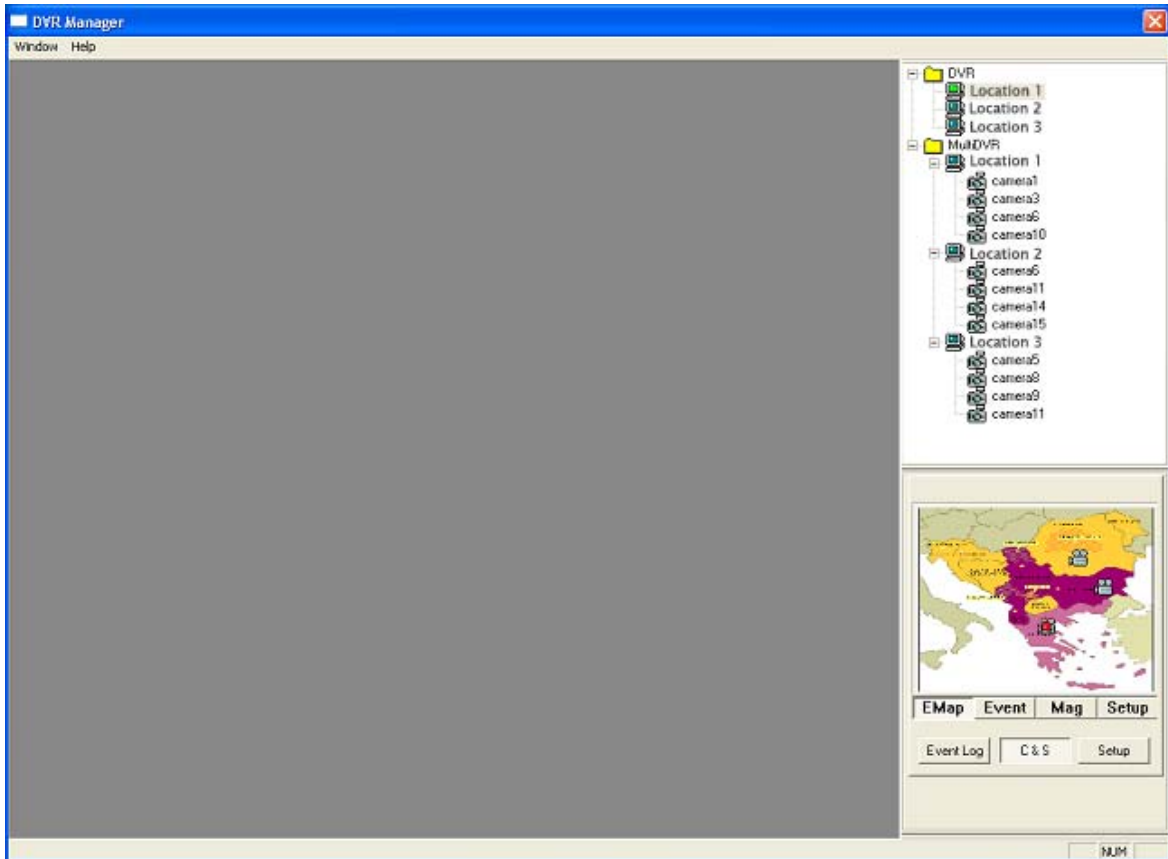
Click on "Mag" to configure E-Map. To create an E-Map image, click on the right mouse and select "Open E-Map". Only BMP files can be in use.



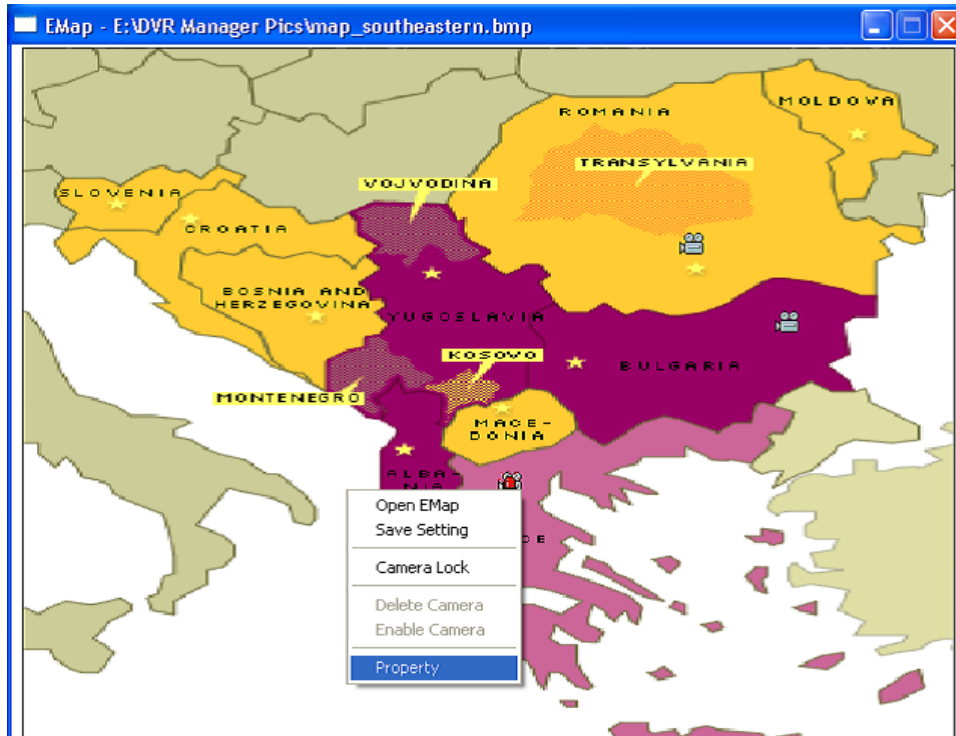
Click on the right mouse and select "Camera Lock" to be able to position the DVRs at desired locations.



Click on the right mouse and select "Save Setting" to save the image and the camera locations.



After the configuration, users can view the selected E-Map image and all DVR sites at the selected locations. To visit a certain DVR site using the E-Map, click on "Mag" and double-click on the site (camera-shaped symbol). Any DVRs (cameras) blinking in red and blue have events happening.



Users can restrict incoming events and receive desired events only regardless of DVR setup. On the E-Map, click on the right mouse and select "Property". Only the checked events will be reported to C&S. Click on "All Apply" to give the same conditions to all the rest of the DVR sites.

